

FROM * PRICE

House & Land Package


SIMONDS



KARRI 16 | EMERGE RANGE

BUILDING
QUALITY HOMES
SINCE 1949

SPEND \$5K & RECEIVE
\$10K
WORTH OF UPGRADES

STRUCTURAL
LIFETIME
GUARANTEE

\$634,628*

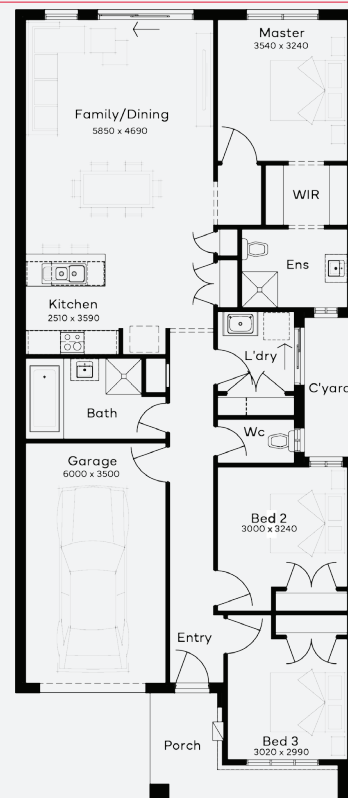
FIRST HOME OWNERS - \$624,628

INCLUSIONS

- + Generous Site Costs
- + Developer & council requirements
- + Photovoltaic panels with inverter
- + Feature front entry door
- + Colorbond Sectional garage door & remote controls
- + Floor coverings to entire house
- + 20mm Stone benchtops to kitchen
- + Quality stainless steel cooktop & oven
- + Ducted Heating
- + Plus much more!

Lot 822 , LARA
Lara Lakes Estate (356m²)

 **3**  **1**  **2**  **1**



Lara Lakes

For enquiries please contact: **Bruno Esposti - 0435219103**

simonds.com.au

*From pricing is based on standard plan, builders preferred siting, site costs allowance, and is subject to extreme site changes beyond our reasonable control and unknown at the time of print. All packages are subject to Developer and Council approval. Package Price does not include stamp duty, government, legal or bank charges. Community Infrastructure Levy and Asset Protection Permit are not included in pricing and is to be arranged by the client directly with the Developer (if applicable). Any alterations may incur additional charges. Confirm land price and availability prior to purchase. Simonds reserves the right to withdraw or amend pricing, inclusions and promotion at any time without notice. *Please refer to the terms and conditions at www.simonds.com.au/terms-and-conditions. This package applies to VIC - Emerge range only. Please speak with your sales consultant for further details. Pricing is current at 20/06/2025.

