

# GLENVILL HOMES



## CEDAR 35 – 2.04

Artistic Impression

5 3.5 2

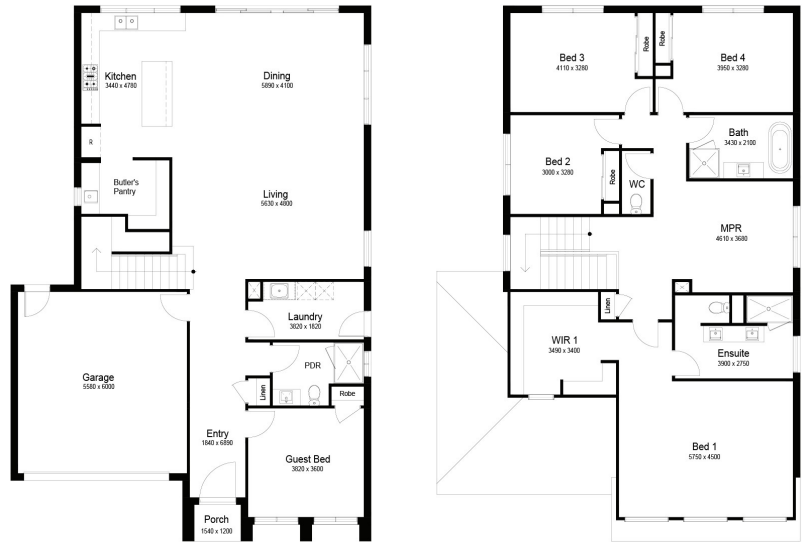
### \$1,069,400\*

Lot 230 Grevillea Court  
Lara

House Size — 35.44sq  
Frontage — 11.9m  
Land Size — 620m<sup>2</sup>

#### INCLUSIONS

- Fixed site costs
- Developer requirements
- Colorbond roof
- 2590mm ceiling height
- 20mm mineral surface benchtops to kitchen and bathrooms
- 900mm Fisher & Paykel cooktop & oven
- LED fixed downlights throughout
- Double glazed windows and sliding door throughout
- Remote garage door
- Flyscreens



glenvillhomes.com.au  
aaron.ruyter@glenvill.com.au  
0498 441 551

**Flinders Walk Estate**  
LARA

Image for illustrative purposes only. Pricing excludes landscaping, fencing, driveway. Floorplan areas may vary slightly in size depending on facade selection. Floorplans shown are not to scale. Floorplan may be mirrored to suit garage crossover location. Subject to Developer approval. Price effective for 3 months from date of issue. Printed on 07 May 2026